



**FCC PART 68:2006
Test Report**

For

Modular Plug

Model Number: RJ45

Brand Name: N/A

Report No.: SZAGC128080301E5

Date of Issue: Mar.26, 2008

Prepared For

PLUG MASTER INDUSTRIAL CO., LTD

Zheng long Industrial Zone, Si Village, Tangxia Town,

Dongguan City, Kwang Tung Province, China

Tel: 86-769-87889195

Fax: 86-769-87889175

Prepared By

Shenzhen Attestation of Global Compliance Science & Technology Co., Ltd.

Suite B11/B12, Huafeng Mall, Chuangye 2nd Road,

25 District, Bao'an, Shenzhen

Tel: 86-755-2974 2355

Fax: 86-755-2600 8484

TABLE OF CONTENTS

TABLE OF CONTENTS..... 1

1. VERIFICATION OF COMPLIANCE..... 2

2. ANGLE MEASUREMENT TEST..... 3

3. INSERTION AND LATCH TEST..... 3

4. INSERTION FORCE TEST..... 4

5. SIZE TEST..... 4

APPENDIX..... 8

PHOTOGRAPHS OF SAMPLE..... 8

1. VERIFICATION OF COMPLIANCE

Equipment Under Test: Modular Plug

Brand Name: N/A

Model Number: RJ45

Serial Number: N/A

Applicant: PLUG MASTER INDUSTRIAL CO., LTD
Zheng long Industrial Zone, Si Village, Tangxia Town, Dongguan City,
Kwang Tung Province, China

Manufacturer: PLUG MASTER INDUSTRIAL CO., LTD
Zheng long Industrial Zone, Si Village, Tangxia Town, Dongguan City,
Kwang Tung Province, China

File Number: SZAGC128080301E5




Date of test: Mar.22~ Mar.25, 2008

Deviation: None

Condition of Test Sample: Normal

The above equipment was tested by Shenzhen Attestation Of Global Compliance Science & Technology Co., Ltd. For compliance with the requirements set forth in the FCC Rules and Regulations Part 68, Subpart F. This said equipment in this report are within the compliance requirements.

The test results of this report relate only to the tested sample identified in this report.

Prepared By	
	_____ Tony Tian Mar.26, 2008
Checked By	
	_____ Randy He Mar.26, 2008
Authorized By	
	_____ King Zhang Mar.26, 2008

2. ANGLE MEASUREMENT TEST

Method

The test sample plug with telecommunication cord was inserted into a compatible mating jack. A measurement of the contact angle between plug and jack conductors, with the plug latch into the jack, was then recorded.

Results

The results are considered acceptable if the maximum angle is no greater than 24 degrees and the minimum angle is no less than 13 degrees. The results for each test sample is show in the following table.

Angle Measurement Results		
Model No.	Sample No.	Angle (deg.)
RJ45	1	15.5

3. INSERTION AND LATCH TEST

Method

the test sample plug shall be capable of insertion and latching into a calibrated gauge. The insertion force shall be 5 lbs. or less. During the test, the sample was placed in a position of interference with the entry of the sample into the gauge. Using a compatible gauge, the plug was inserted into the jack until the latch locked in place. During this procedure, the maximum force was measured and recorded.

The sample was then withdrawn, and again the force was measured. During removal, the required force shall not exceed 10 lbs.

Results

The results are shown in the following table.

Insertion and withdrawal Force			
Model No.	Sample No.	Insert (lbs)	Withdraw (lbs)
RJ45	1	4	3

4. INSERTION FORCE TEST

Method

The test sample plug was subjected to an insertion force test by applying a gradual force to the plug while in the insertion until the plug moved beyond the Datum -A- position with a maximum force of two pounds. During this test, the sample was placed in a position of normal use and the force applied in the direction required to insert the plug into the compatible jack.

The results are considered acceptable when the test sample does exceed 0.07 inch beyond the Datum –A- position.

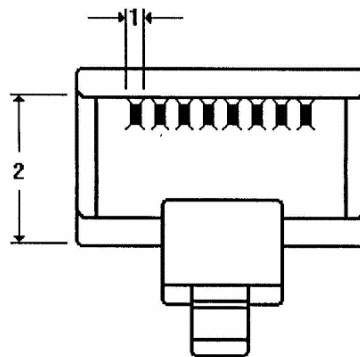
Results

The results are shown in the following table.

Insertion Force Results		
Model No.	Sample No.	Distance (lbs)
RJ45	1	0.11 (2)

5. SIZE TEST

Unkeyed Plug-8 Position
Bottom View



Point of Measurement	Requirement	Results
1	0.022 Max.	0.0205
2	0.260 REF	0.2553

Note: All dimensions are expressed in inches.

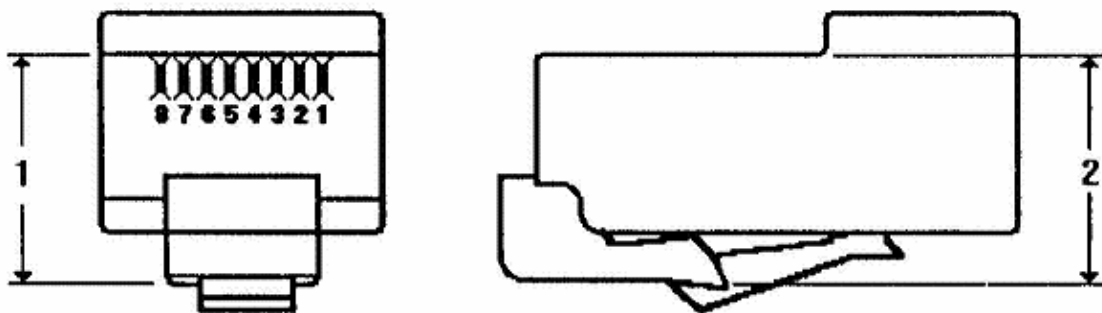
Unkeyed Plug-8 Position
Bottom View



Point of Measurement	Requirement	Results
1	0.043 Max.	0.0054
2	0.138 to 0.142	0.13876
3	0.098 to 0.102	0.0995
4	0.058 to 0.062	0.0593
5	0.018 to 0.022	0.0188

Note: All dimensions are expressed in inches.

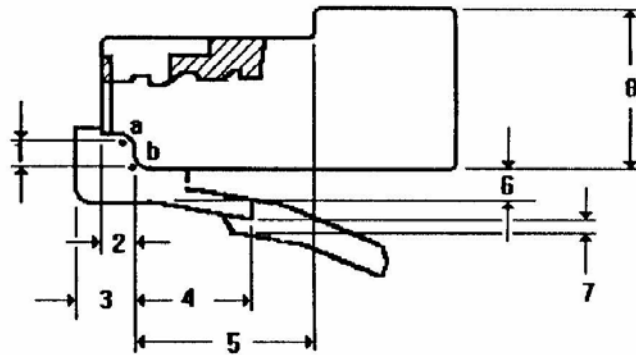
Unkeyed Plug-8 Position
Front and Side View



Point of Measurement	Requirement	Results
1	0.329 Max	0.3012
2	0.329 Max	0.3094

Note: All dimensions are expressed in inches.

Unkeyed Plug-8 Position
Side View

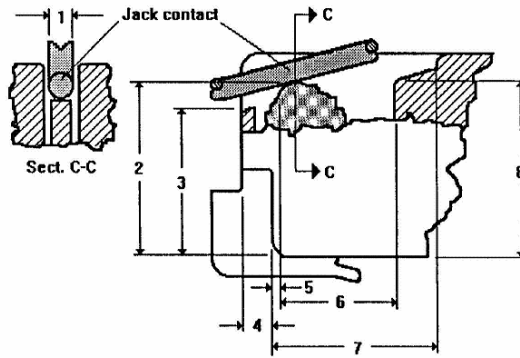


Point of Measurement	Requirement	Results
1	0.049 Min	0.0502
2	0.035Min	0.0656
3	0.092 Max	0.0918
4	0.227 to 0.237	0.2323
5	0.485 Min	0.4859
6	0.052 Max	0.0471
7	0.025 Max	0.0112
8	0.315 Max	0.3124

Note 1: a and b are the center points for the radius of the curves shown at the front of the plug. The dimension lines point to these center points.

Note 2: All dimensions are expressed in inches.

Unkeyed Plug -6 or 8 Position
Plug/Jack Contact Specification



Point of Measurement	Requirement	Results
1	0.0177 to 0.0195	0.0180
2	0.232 to 0.243	0.2334
3	0.200 Max	0.1792
4	0.035 to 0.057	0.0432
5	0.001 to 0.018	0.0106
6	0.110 Min	0.11415
7	0.162 Min	0.2206
8	0.245 Max	0.2380

Note: All dimensions are expressed in inches.

**APPENDIX
PHOTOGRAPHS OF SAMPLE**



---END of REPORT---