



**PLUG MASTER
INDUSTRIAL CO., LTD.**

**乾羅科技股份有限公司
Plug Master Industrial Co., Ltd.**

■ 國外業務部 **International Sales Office**

新北市蘆洲區國道二段一巷52號6樓
6F, No. 52, Lane 1, Sec 2, Guo Dao Rd. Lu-Chou Dist,
New Taipei City 24760, Taiwan
TEL: 886-2-8983-2915, 8981-4936, 2980-2740
FAX: 886-2-2980-1297
pmcplug@plugmaster.com.tw

■ 台灣廠 **Taiwan Factory**

宜蘭縣五結鄉仁五路一段46巷1號
No. 1, Ln 46, Sec. 1, Ren 5th Rd., Wujie Township,
Yilan County, 268, Taiwan
TEL: 886-3-9600-958, 9606-038, 9606-039 #167
FAX: 886-3-9601-130
chyan.luo@msa.hinet.net

■ 大陸廠 **China Factory**

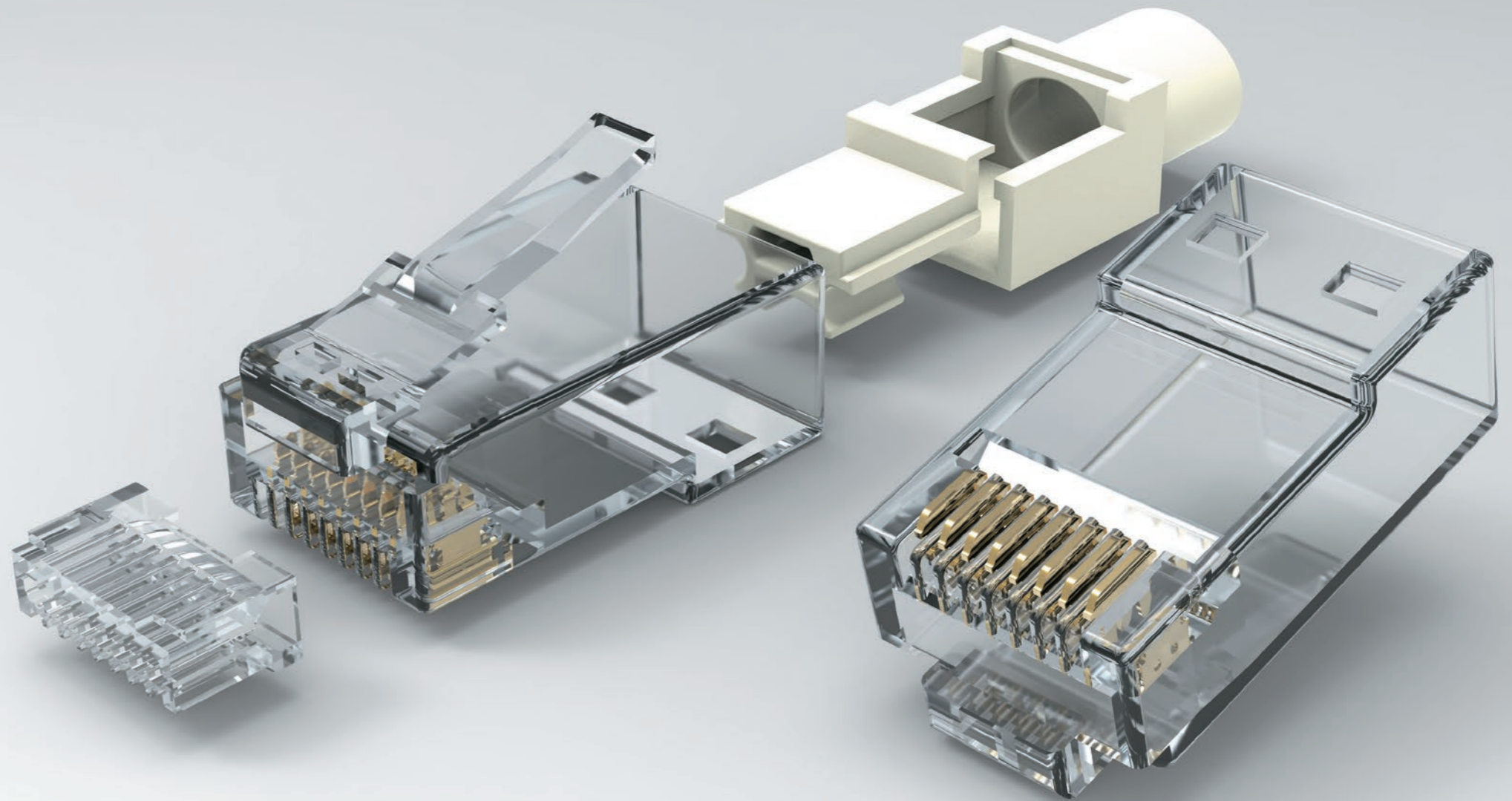
**東莞普萊格通訊電子有限公司
Plug Master Industrial Co., Ltd.**
廣東省東莞市塘廈鎮四村正龍工業區正龍橫路4號
Zheng Long Industrial Zone, Si Village, Tang Xia Town,
Dongguan City, Kwang Tung Province, China.
TEL: 86-769-8788-9195, 769-8788-9197
FAX: 86-769-8788-9175
pmcplug@263.net

www.plugmaster.com.tw

ISO 9001
ISO 14001
IECQ-QC080000



PLUG & BOOT & TOOL MANUFACTURER



**PLUG MASTER
INDUSTRIAL CO., LTD.**

A partner you can trust

Company History

More than 36 years

- 1983** ■ PMC was founded in Lu-Chou, Taipei County. Started the production of Phone Jack.
- 1997** ■ For business expansion, PMC established its 2nd factory in Yilan County, Taiwan, for the production of modular plugs.
- 1999** ■ UL certified for all Modular Plugs.
- 2004** ■ ISO9001:2000 certified for Dongguan factory (China).
- 2006** ■ ISO14001:2004 certified for Dongguan factory (China).
- 2008** ■ PLUG MASTER have granted the approval of IECQ QC 080000
- 2010** ■ New plant was built in Yilan, Taiwan
- 2012** ■ The application of patent registration in Taiwan for the Automatic Inspection Embedding Machine was granted.
- 2014** ■ Purchased new injection molding machines from Japan.
■ The application of patent registration in China for the Short Latch was granted.
- 2015** ■ The application of patent registration in Taiwan for the Short Latch was granted.
- 2016** ■ The development of Fast Plug was completed and the application of patent registration in Taiwan was granted.
■ The development of Cat.6A series
■ The promotion of New Contact Pin
- 2017** ■ The completion of internal test of POE
■ Purchased the C8 Fluke inspection device DSX-8000
■ The development of C8 Tool less plug was completed.
- 2018** ■ Certified with ETL Cat.8
■ Certified with GHMT Cat.8
■ Certified with ISO9001 TAIWAN
■ Updated the UL certificate



Assembly Line

Certificates



FCC RJ11

FCC RJ45

UL

ISO 9001

ETL

GHMT

Injection Production Line



China Factory



Taiwan Factory



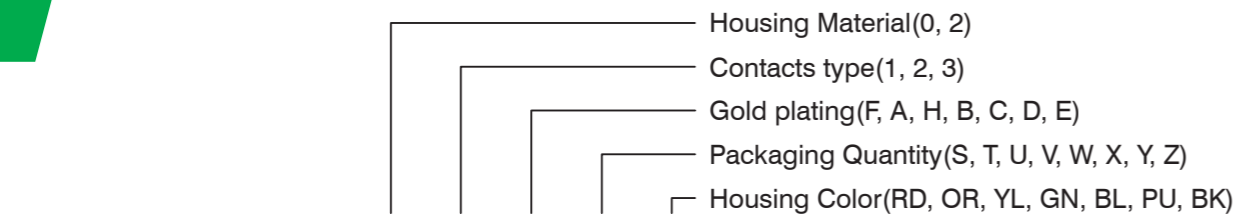
Model Index

RJ45 Plug

CAT.5e

CAT6

Plug

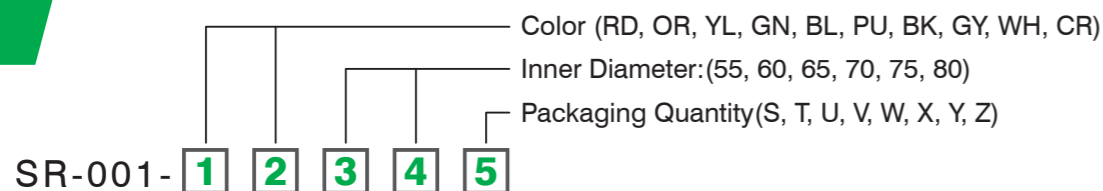


No.:PX - 0XX - XX - **1** **2** **3** **4** **5**

Series No.:P8-087- **1** **2** **3** **4** **5**

- Housing Material:** Polycarbonate, UL Flammability Rating:
 ① =UL 94V-0, RoHS Compliant.
 ② =UL 94V-2, RoHS Compliant.
- Contacts Type:** ① =Straight pin fits Stranded wire only.
 ② =Two prong angled pin fits Solid/Stranded Wires.
 ③ =Three prong pin fits Solid/Stranded Wires.
- Gold Plating:** ① = Fu"(Flash), ② = 2-3u"(0.0508μm≤A≤0.0762μm),
 ③ = 3u"(≥0.0762μm), ④ = 6u"(≥0.1524μm),
 ⑤ = 15u"(≥0.381μm), ⑥ = 30u"(≥0.762μm),
 ⑦ = 50u"(≥1.27μm).
- Packaging Quantity:** ① = 1000 pcs, ② = 500 pcs, ③ = 250 pcs, ④ = 200 pcs
 ⑤ = 100 pcs, ⑥ = 50 pcs, ⑦ = 25 pcs, ⑧ = 10 pcs ⑨ = Other
- Housing Color:** Transparent or other colors are available.
 (Red=RD, Orange=OR, Yellow=YL, Green=GN, Blue=BL, Purple=PU, Black=BK)

Boot



SR-001- **1** **2** **3** **4** **5**

- Color Available:** RD=Red, OR=Orange, YL=Yellow, GN=Green,
 BL=Blue, PU=Purple, BK=Black
 GY=Gray, WH=White, CR=Clear
- Inner Diameter Available:** 5.5mm=55, 6.0mm=60, 6.5mm=65
- Packaging Quantity:** ① = 1000 pcs, ② = 500 pcs, ③ = 250 pcs,
 ④ = 200 pcs, ⑤ = 100 pcs, ⑥ = 50 pcs,
 ⑦ = 25 pcs, ⑧ = 10 pcs, ⑨ = Other

Tool

- PM-3008R PM-1008S
 PM-L2182R PM-500R
 PM-236Q/Q1B/Q1B-U

CAT.5e

	P8-004 P8-005		P8-006 P8-007		P8-008	P8-009
Description	8P8C-F Shielded	8P8C-R Shielded	8P8C-F	8P8C-R	8P8C-F with insert	8P8C- R Shielded with insert
Insulation O.D.	< 1.0 mm	< 1.0 mm	< 1.0 mm	< 1.0 mm	< 1.0 mm	< 1.0 mm
Max. Cable O.D.	5.00 mm	5.50 mm	5.00 mm	5.50 mm	5.00 mm	5.50 mm

CAT6

	P8-018	P8-001	P8-006-29	P8-020-10
Description	8P8C-R With Insert	8P8C-F 2 Layers	8P8C 2R-V Super short guide	8P8C-F 2 layers Shielded
Insulation O.D.	< 1.0 mm	< 1.0 mm	< 1.0 mm	< 1.0 mm
Max. Cable O.D.	6.00 mm	5.00 mm	6.50 mm	5.00 mm

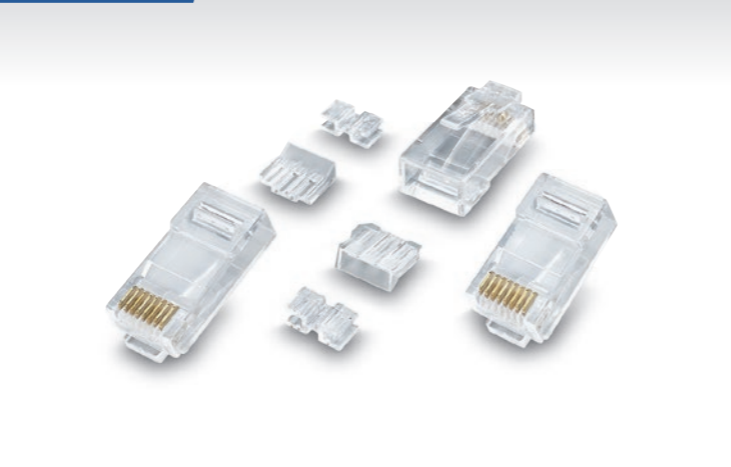
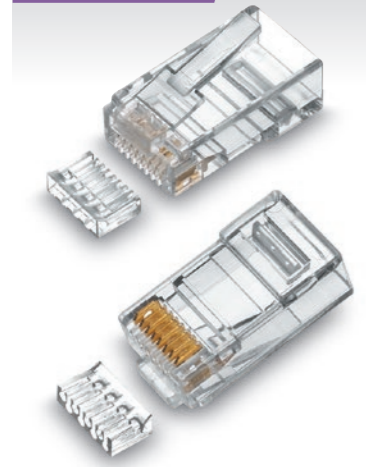
RJ45 Plug

CAT6A

CAT8

CAT6

CAT6A



P8-030-6

P8-031-3

P8-063

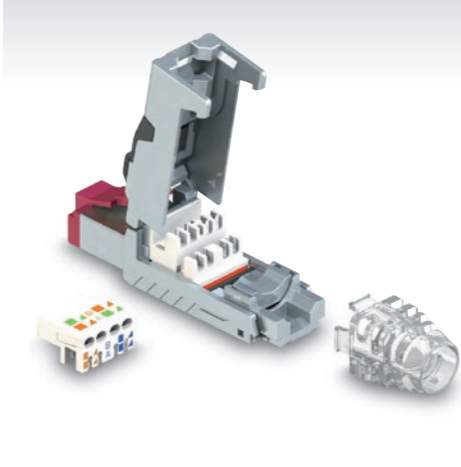
P8-063-1

P8-063-9

P8-063-10

CAT6A

CAT6A/CAT8 Field Terminable Plug



P8-054-1

P8-078

P8-078-1

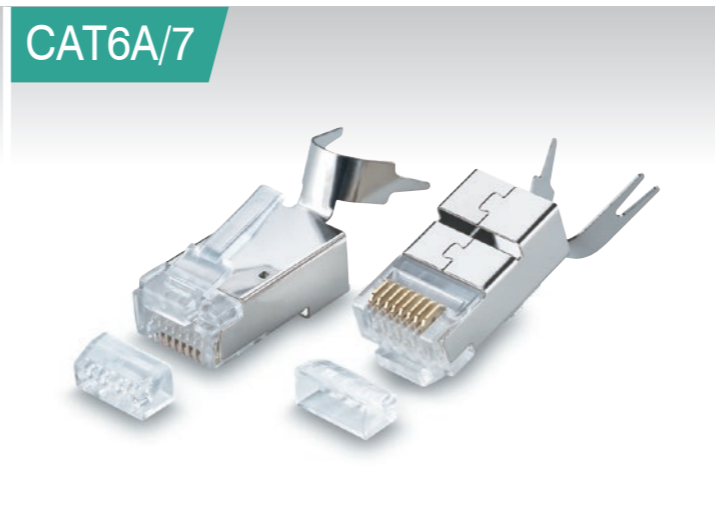
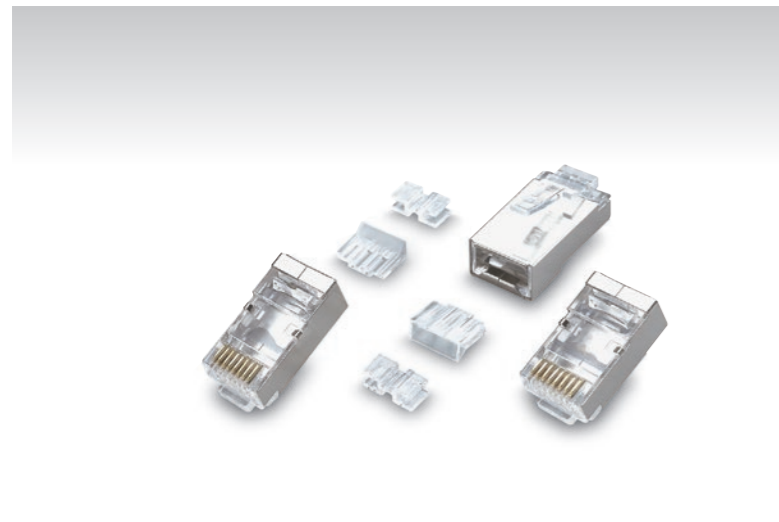
P8-079

P8-079-1

Description	8P8C-F 2 layers with insert 1.14 mm	8P8C-F 2 layers Shielded with insert 1.14 mm	8P8C F 2 layers with insert	8P8C F 2 layers with divider and insert	8P8C F 2 layers with insert 0.80 mm	8P8C-F-V 2 layers with divider and insert 1.1 mm
Insulation O.D.	< 1.14 mm	< 1.14 mm	< 1.00 mm	< 1.00 mm	< 0.8 mm	< 1.10 mm
Max. Cable O.D.	6.50 mm	6.50 mm	6.50 mm	6.50 mm	6.50 mm	6.50 mm

Description	8P8C F 3 layers with insert and SR I.D.8.3 mm or 8.7 mm	C6A Shielded Termination plug, snap-in boot type	C8 Shielded Termination plug, snap-in boot type	C6A Shielded Termination Plug Screw-fit boot type	C8 Shielded Termination Plug Screw-fit boot type
Insulation O.D.	< 1.2 mm	23 ~ 26 AWG	22 ~ 24 AWG	23 ~ 26 AWG	22 ~ 24 AWG
Max. Cable O.D.	8.70 mm	6.00 - 7.50 mm	7.00 - 8.50 mm	6.00 - 7.50 mm	7.00 - 8.50 mm

CAT6A/7



P8-064

P8-064-5

P8-064-6

P8-064-11

P8-069

P8-069-1

P8-069-5

P8-069-9

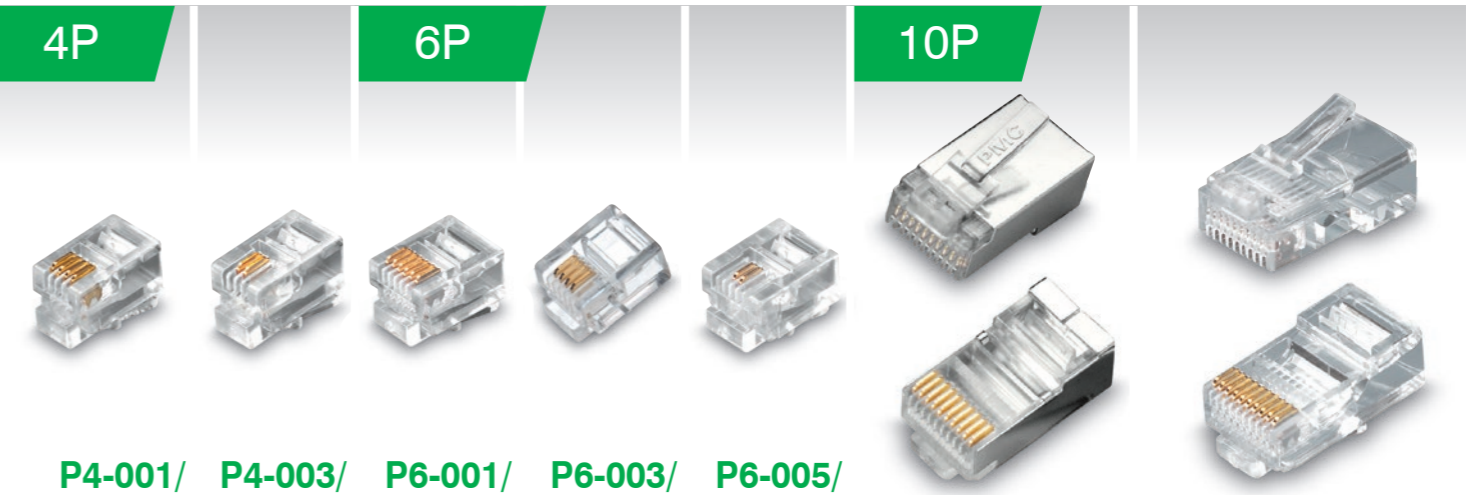
Description	8P8C F-RV Shielded with divider and insert	8P8C-F-RV Shielded with insert	8P8C-F-RV Shielded with insert 1.10 mm	8P8CF-RV Shielded with insert 0.80 mm	8P8C F Shielded w/ cable clamp, wire insert 1.4 mm	8P8C F Shielded w/ cable clamp, wire insert 1.2 mm	8P8C F Shielded w/cable clamp, wire insert 1.5 mm	8P8C F Shielded w/cable clamp, wire insert 1.6 mm
Insulation O.D.	< 1.0 mm	< 1.0 mm	< 1.1 mm	< 0.80 mm	< 1.4 mm	< 1.2 mm	< 1.5 mm	< 1.60 mm
Max. Cable O.D.	6.50 mm	6.50 mm	6.50 mm	6.50 mm	7.50 mm	7.50 mm	8.30 mm	8.30 mm

RJ9/RJ11/RJ12/RJ48 Plug

4P

6P

10P



**P4-001/
P4-002**

**P4-003/
P4-004**

**P6-001/
P6-002**

**P6-003/
P6-004**

**P6-005/
P6-006**

P10-001

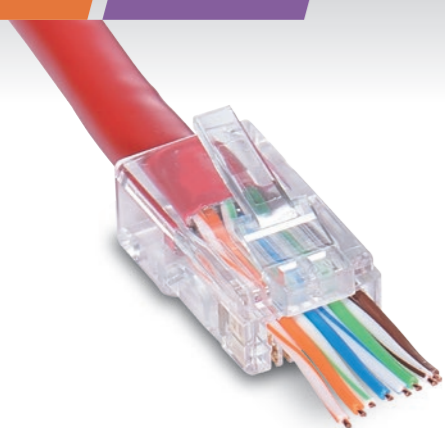
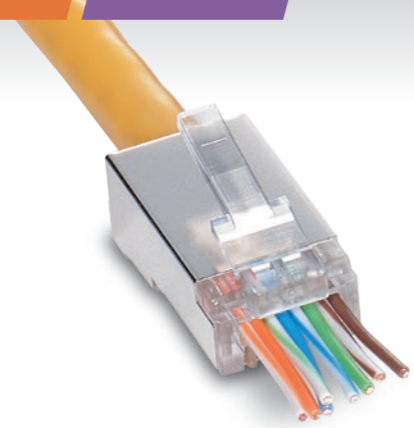
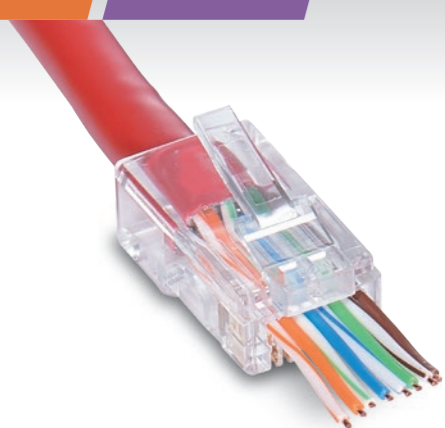
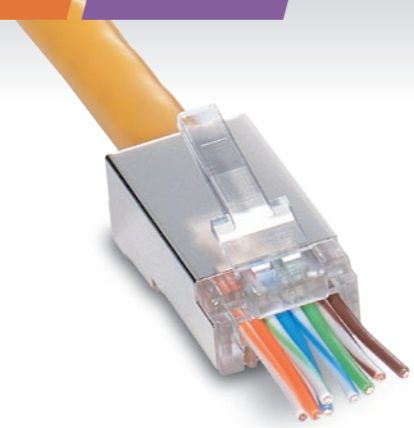
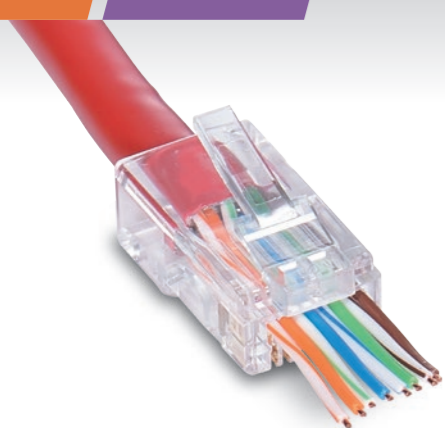
P10-002

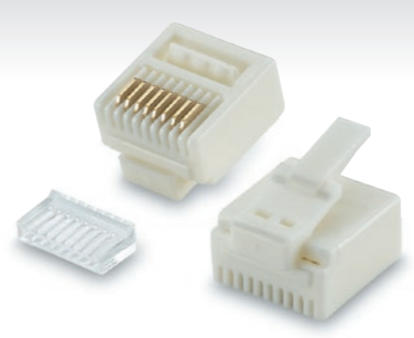


P10-003

Description	4P4C-F/ 4P4C-R	4P2C-F/ 4P2C-R	6P6C-F/ 6P6C-R	6P4C-F/ 6P4C-R	6P2C-F/ 6P2C-R	10P10C-R Shielded	10P10C-F	10P10C-R
Insulation O.D.	1.0 mm	1.0 mm	1.0 mm	1.0 mm	1.0 mm	1.0 mm	1.0 mm	1.0 mm
Max. Cable O.D.	-	-	-	-	-	5.50 mm	5.00 mm	5.50 mm

Fast Plug UL# E205572

New Product

	CAT.5e	CAT6	CAT.5e	CAT6	CAT6
					
	P8-007-47	P8-007-48	P8-005-27	P8-005-24	P8-005-26
Description	8P8C-R	8P8C-2R-V	8P8C-F-RV Shielded	8P8C F-RV Shielded	8P8C F-RV Shielded
Insulation O.D.	< 1.0 mm	< 1.0 mm	< 1.0 mm	< 1.0 mm	< 1.2 mm
Max. Cable O.D.	5.50 mm	6.50 mm	5.30 mm	6.50 mm	6.50 mm

	CAT6	CAT6A	CAT6A
			
	P8-S86	P8-S91	P8-035-20
Description	Short body 8P8C Nylon flexible latch	S-8P8C F-L Shielded with cable clamp and insert	8P8C F-RV Shielded 2 layers with cable clamp and insert. Crimping type.
Insulation O.D.	< 1.05 mm	< 1.05 mm	< 1.0 mm
Max. Cable O.D.	5.0 mm	6.00 mm	6.50 mm

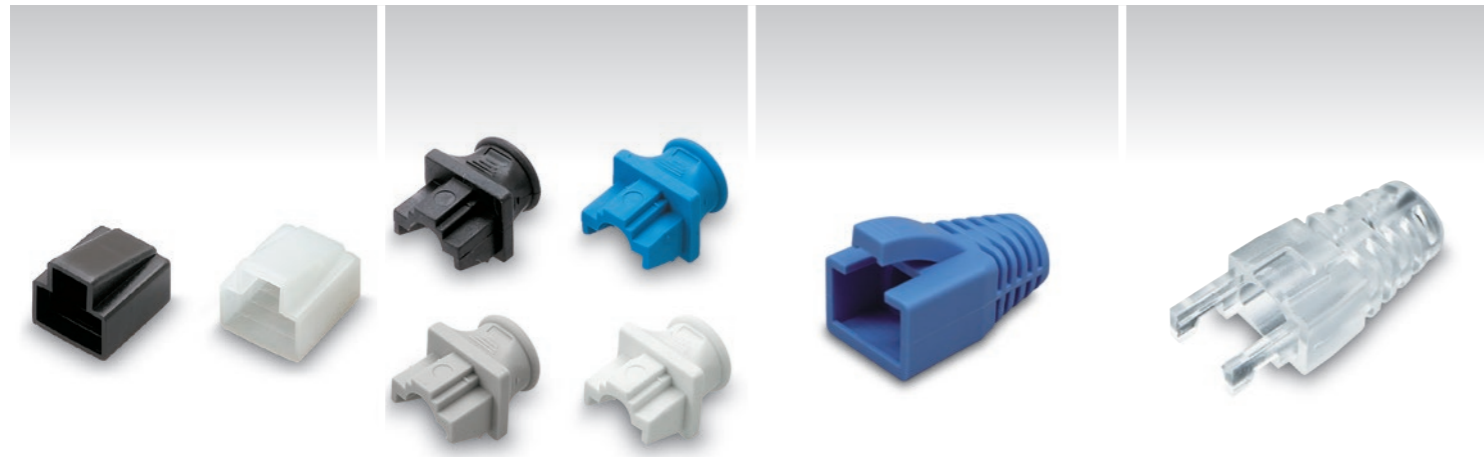
	CAT.6A	FAST TOOL
		
	P8-020-14	PM-3008R
Description	8P8C-F 2 Layers Shielded	PROFESSIONAL FAST RJ45 PLUG CUTS-CRIMPS TOOL
Insulation O.D.	<1.20 mm	Patent No. M549476
Max. Cable O.D.	7.10 mm	Recommend Plug FAST Plug , 8P8C Standard Plug

Plug Boot and Cover

	SR-001	SR-007	SR-008	SR-010R	SR-010M
					
Description	RJ45 Cable Snagless Boots (O.D.5.0 / 5.5 / 6.0 / 6.5 mm)	Cat.6 Plug Boots for AMP (O.D.7.0 mm)	Cat.5e, Cat.6 Plug Boots (O.D. / 5.5 / 6.0 / 6.5 mm)	Cat.5e PVC Boot	Cat.6 PVC Boot
Recommend Plug	-	-	-	P8-005, P8-007, P8-001, P8-020, P8-031	P8-006-29, P8-008, P8-009, P8-018, P8-019, P8-030, P8-031, P8-050-1

Plug Boot and Cover

Crimping Tool



	SR-011	SR-012	SR-014	SR-021
Description	Plug Protect Cover	Jack Dust Cover	Standard Pull Over Strain Relief Boot with special Tail (I.D. 7.0 / 7.5 / 8.0 mm)	Specific Boot for Arc Latch plug
Recommend Plug	-	-	P8-069 Series	P8-018-9



	PM-236Q	PM-236Q1B-6.0	PM-236Q1B-7.0	PM-236Q1B-8.0	PM-236 Q1B-U
Description	Short Body 8P8C/RJ45 Shielded Plugs	8P8C/RJ-45 Shielded Plugs	8P8C/RJ-45 Shielded Plugs	8P8C/RJ-45 Shielded Plugs	Crimping tool for CAT.6A UTP Multiple piece long body plug
NOTE O.D.	CABLE O/D around \varnothing 6.0 mm	CABLE O/D around \varnothing 6.0 mm	CABLE O/D around \varnothing 7.0 mm	CABLE O/D around \varnothing 8.0 mm	CABLE O/D around \varnothing 7.0 mm
Recommend Plug	P8-M02, M04, M06, M09, M15	P8-074-1, P8-074-2	P8-069, P8-069-1,-6,-7	P8-069-2,-3,-4,-5,-8,-9	P8-054-1, P8-054



	SR-030	SR-031	SR-032R	SR-032F	SR-032M
Description	Short boot for short body plug "F" type.	Short boot for short body plug "R" type.	PC Plug Boot for Cat.5e one piece	PC Plug Boot for Cat.6 one piece plug	PC Plug Boot for Cat.6 2 or 3 piece
Recommend Plug	P8-S52-1	P8-S53-4	P8-007, P8-005	P8-001, P8-020	P8-006-29, P8-008, P8-009, P8-018, P8-030, P8-031, P8-050-1, P8-063, P8-064



	PM-L2182R	PM-1008S	PM-500R
Description	Professional Modular Crimps, Strips, & Cuts Tool	Modular Cuts-strips-crimps Tool For Short Body Plug	8P8C/RJ-45, 6P6C/RJ-12, 6P4C/RJ-11 PLUGS w/ratchet
Recommend Plug	8P8C(RJ45)	Short body 8P UTP/STP	-